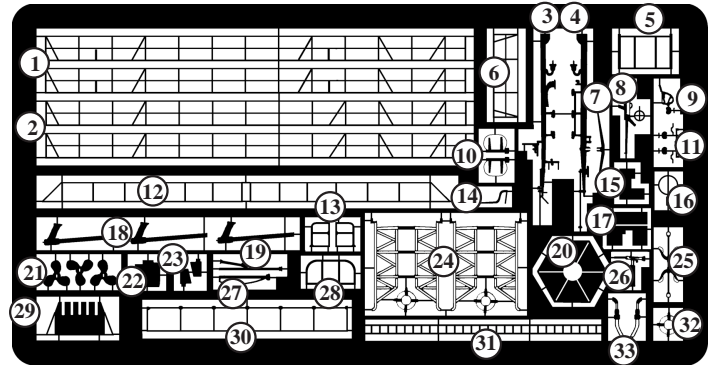
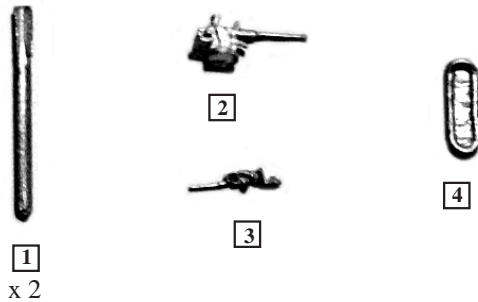


This kit contains a mixture of resin and white metal small parts, of which some of the resin parts have been attached to sprues for ease of casting.

Care must be taken when detaching the parts from the sprues, to remove the flash without causing damage. When cleaning off the excess material using files or abrasive paper, it is recommended that a mask is worn as resin dust can be harmful to health if inhaled.

### Parts Lists



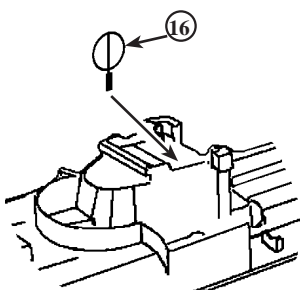
- |                |                   |
|----------------|-------------------|
| 1. Torpedo x 2 | 2. 3.7cm Flak Gun |
| 3. 20mm MG     | 4. Rubber Boat    |

- |                                    |                                 |
|------------------------------------|---------------------------------|
| 1. Side rails with Dodgers         | 18. Prop Shafts                 |
| 2. Side rails Open                 | 19. Ensign Staff                |
| 3. S10 Mast (Right)                | 20. Single 20mm Footplate (S10) |
| 4. S10 Mast (Left)                 | 21. Propellers                  |
| 5. Forward Twin 20mm Training Stop | 22. Centre Rudder               |
| 6. Stern Rail                      | 23. Side Rudders                |
| 7. S10 Mast Yard                   | 24. Depth Charge Rails          |
| 8. Single 20mm (S10)               | 25. Anchors                     |
| 9. 3.7cm Breach Mech & Seat        | 26. Single Machine Gun (S10)    |
| 10. Torpedo Tube Doors             | 27. Jackstaff                   |
| 11. 3.7cm Layers Mechs & Seats     | 28. Twin 20mm Depression Stop   |
| 12. Bow Railing (S10 only)         | 29. 30mm Flak Rear Shield       |
| 13. Lookout Step Handrails         | 30. Single 20mm Handrail (S10)  |
| 14. Twin 20mm Depression Arm       | 31. Ladders                     |
| 15. Twin 20mm Shield               | 32. Liferings                   |
| 16. DF Loop Aerial (S80)           | 33. Engine Exhaust Pipe         |
| 17. 30mm Flak Shield               |                                 |

### Photo Etched Parts General Instructions

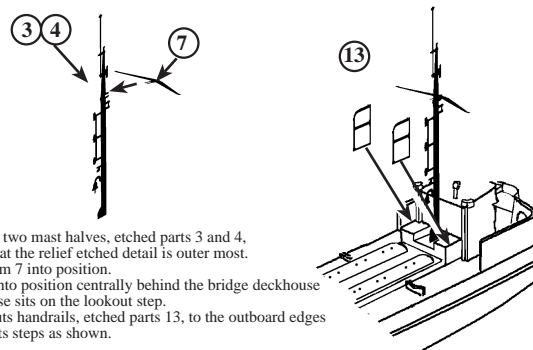
- Do not remove the etched parts from the fret until you are ready to use them.
- Before assembly, soak the etched parts in a suitable solvent, such as white spirit, to de-grease the surfaces for painting.
- Cyanoacrylate adhesive (Super glue) or contact adhesive such as Elmers white glue may be used. These can be applied with a pin or piece of stretched sprue.
- When removing parts from the fret, place the fret on a hard surface, such as a smooth ceramic tile, in order to prevent parts bending whilst cutting through the holding tabs. It is suggested that a #11 type of modelling knife blade is used for this purpose.
- When shaping or bending a part, a straight edged blade such as a chisel blade #17 or #18 will give a good sharp corner, or alternatively a small pair of smooth jawed pliers may be used.
- If a part is bent incorrectly, lay it on a hard flat surface and roll it flat with a cylindrical object such as a modelling knife handle.
- It is suggested that rails are pre-measured, where practical, using a pair of compass dividers and then tacked to the deck edge every third or fourth stanchion with a small drop of glue. When a section is complete, run a thin line of glue along the inside edge to attach it firmly to the deck.

### DF Antenna



Fit DF antenna, etched part 16 to bridge roof as shown, slightly to port of centre.

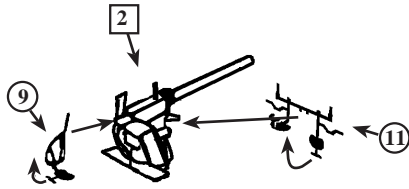
### Mast Assembly



Assemble the two mast halves, etched parts 3 and 4, together so that the relief etched detail is outer most. Fit the yardarm 7 into position. Fit the mast into position centrally behind the bridge deckhouse so that the base sits on the lookout step. Fit the lookouts handrails, etched parts 13, to the outboard edges of the lookout steps as shown.

### 3.7cm Flak Gun Assembly

Assemble the etched parts to the 3.7 cm Flak cannon as shown by folding the loaders seat on etched part 9 to the right so that it lays horizontal. Fold the seat back rest up so that it is vertical, then fit part 9 to the rear of the gun mechanism.

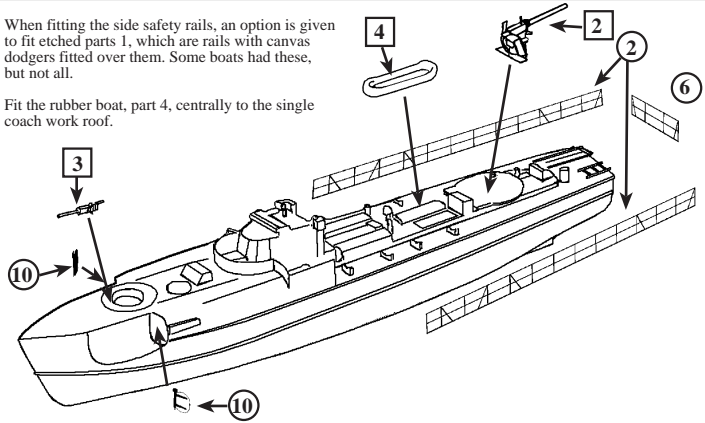


Fold the layers seats on etched part 11, 90° to the rear so that they lay horizontal, then fold the seat backs another 90° so they are vertical. Fit the gun layers equipment to the mounting so that the two central locating prongs fit over the spigot protruding from the front of the gun below the barrel.

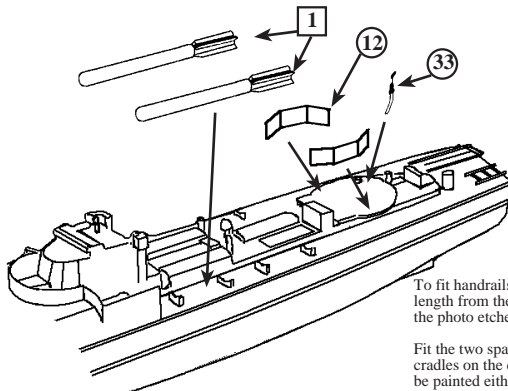
### General Layout of Parts

When fitting the side safety rails, an option is given to fit etched parts 1, which are rails with canvas dodgers fitted over them. Some boats had these, but not all.

Fit the rubber boat, part 4, centrally to the single coach work roof.



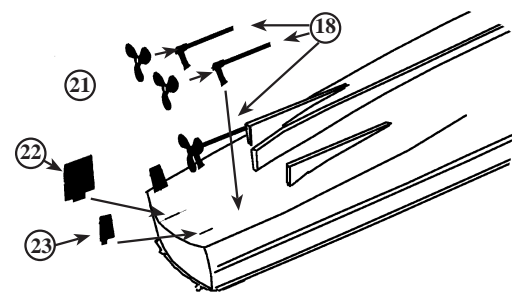
### Torpedo and Handrail Location



To fit handrails 12, they must first be cut to length from the longer sections provided in the photo etched fret.

Fit the two spare torpedoes to the forward cradles on the deck. The torpedoes would be painted either black or dark grey in colour.

### Propeller and Rudder Location



Assembly of the propellers and rudders is only necessary if the model is to be mounted as a full hull display. The centre hubs of the props can be made by cutting some small lengths of plastic rod and rounding of one end before fitting centrally onto the propeller. Location of the rudders may be made easier by cutting slots into the hull so that the lugs on the parts can fit in positively.

### Colour Chart and Paining Guide

 Schnellbootweiss

 Hellgrau 50

 Hellgrun

 Dunkelgrau 51

 Hellbraun

 Dunkelgrau 2

 Schiffsbodenfarbe III Grau I

All colours are matched as closely as possible to those detailed in the Snyder and Short Kriegsmarine Ship Colours sets. These paints are available from Sovereign Hobbies Colourcoats range

The colours shown on this guide are for an S80 series boat of the 1st S-Boat Flotilla in the Baltic. If the canvas screens are fitted to the side rails, the camouflage pattern was continued up on to these.

