

# H.M.S. PEACOCK

## 1/350 Scale

The *Peacock* class warships were designed specifically to provide an ocean going back -up for the Marine Department of the Hong Kong Police. Originally a class of five vessels, 75% of the cost of building and maintenance was born by the Hong Kong government; only three vessels were retained in Hong Kong after 1988. They were HM Ships *Peacock*, *Plover* and *Starling*. HM Ships *Swift* and *Swallow* were sold to the Republic of Ireland's Navy where they are still in service.

*H.M.S. Peacock* entered service in 1983 and remained in service in Hong Kong until 1997 when the territory was handed back to mainland China. The three remaining vessels of the class were sold to the Phillipines where they underwent extensive modernisation.

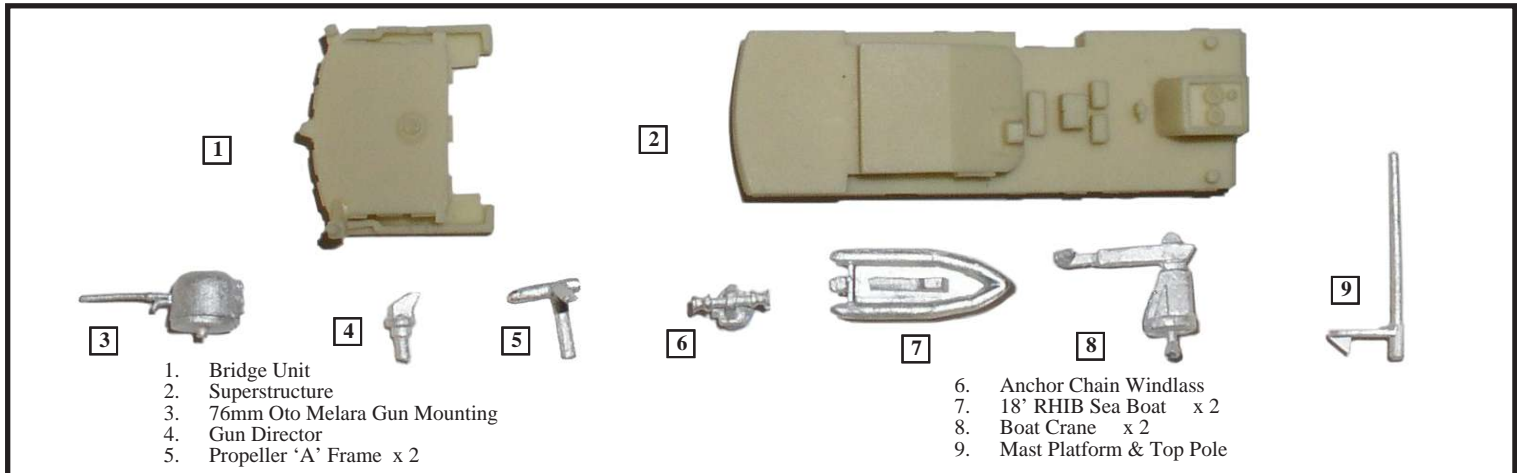
Displacement 700 tons. Dimensions 60m x 10m x 5m. Speed 28 kts. Armament 1x 76mm Gun.

### General Precautions

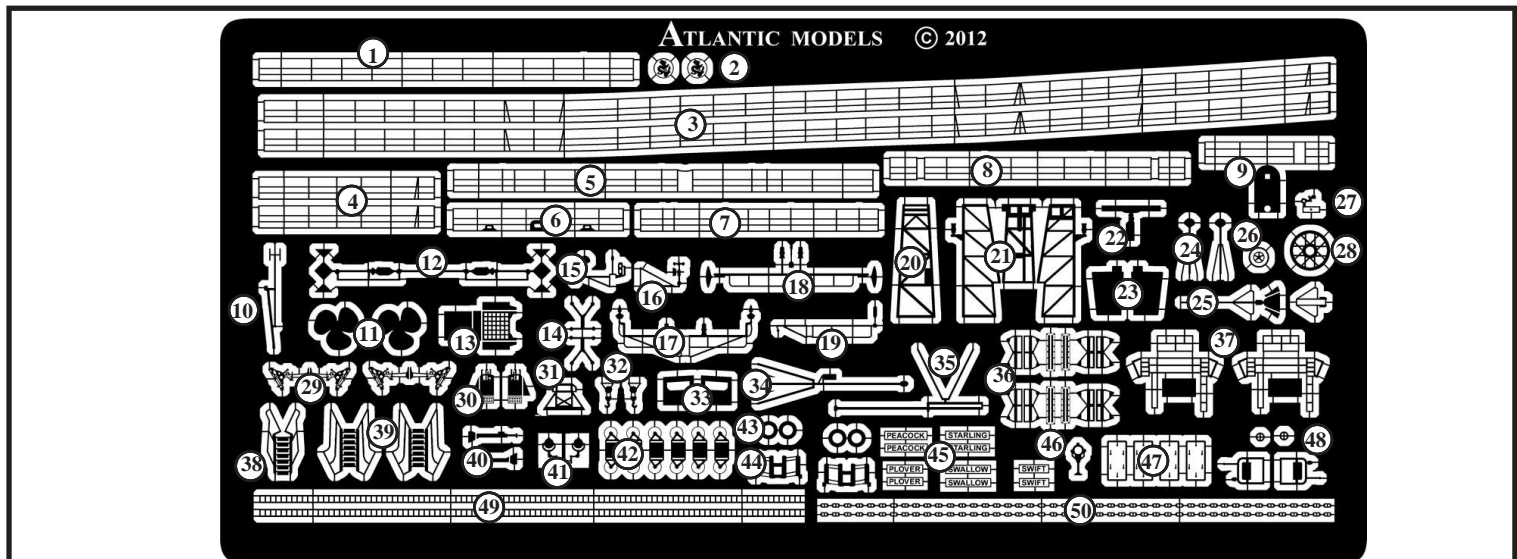
When assembling a Resin / Photoetched metal kit, certain precautions must first be taken.

1. Resin dust can be harmful if inhaled. It is recommended that you wear a suitable dust mask when drilling or sanding resin parts.
2. Cyano adhesives (super glues ) are generally used to assemble this type of kit. Care must be taken when using this type of adhesive as it will bond in seconds. Follow the advice on the container.
3. Wash resin parts in a solution of warm soapy water before assembly. This will remove any residual mold release agents and ensure a good key for painting.
4. Soak photoetch parts in a suitable solvent, such as white spirit, to degrease the surfaces prior to painting.

### RESIN & WHITE METAL PARTS



### PHOTO ETCHED METAL PARTS



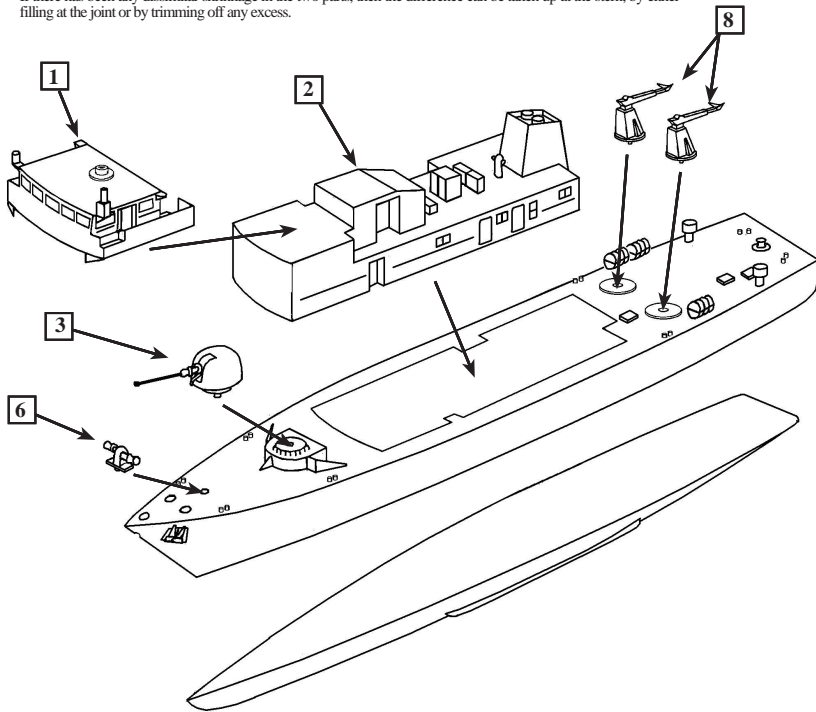
- |  |                              |                                   |                                    |
|--|------------------------------|-----------------------------------|------------------------------------|
| 1. Railings (Superstructure Port)      | 13. Signal Flag Stowage      | 26. Gun Turret Rear Plate         | 39. Inclined Ladders (Bridge Wing) |
| 2. Funnel Badges                       | 14. Bridge Front Frames      | 27. Gun Director Optical Sight    | 40. Crane Operating Jacks          |
| 3. Railings (Main Deck Forward)        | 15. Mast Top Antenna Array   | 28. Gun Director Footplate        | 41. Signal Lamps                   |
| 4. Railings (Main Deck Aft)            | 16. Mast Top Anemometer Yard | 29. Flare Launchers               | 42. Cable & Rope Reels             |
| 5. Railings (Superstructure Starboard) | 17. Mast Upper Yards         | 30. Crane Control Panels          | 43. Life Rings                     |
| 6. Railings (Stern)                    | 18. Mast Lower Yards         | 31. Outboard Motor Rack           | 44. Life Ring Racks                |
| 7. Railings (Bridge Roof)              | 19. Mast Fore and Aft Yards  | 32. Crane Hooks                   | 45. Ships Name Plates              |
| 8. Railings (Signal Deck)              | 20. Mast Rear Lattice Frame  | 33. Bridge Wing Rear Bulwarks     | 46. Searchlight                    |
| 9. Mast Platform and Railings          | 21. Mast Lattices            | 34. Ensign Staff                  | 47. Doors                          |
| 10. Funnel Mounted Antenna             | 22. Radar Antenna            | 35. Jack Staff                    | 48. Boat Fittings                  |
| 11. Propellers                         | 23. Rudders                  | 36. Boat Cradles                  | 49. Vertical Ladder Stock          |
| 12. Dan Buoys                          | 24. ESM Sensors              | 37. Boat Fuel Stowage Racks       | 50. Anchor Chain                   |
|  | 25. Bridge Roof DF Antenna   | 38. Inclined Ladder (Bridge Roof) |                                    |

## MAIN STRUCTURAL PARTS

Before assembling this kit in too greater degree, it would be best to decide if it is to be portrayed as a waterline model, or full-hull and mounted.

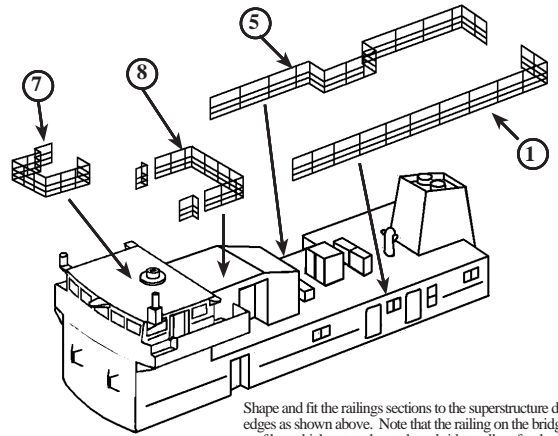
If it is to be modeled full-hull, clean off the mold extraction lugs from the upper and lower hull parts, and fix the two parts together, lining up the upper and lower hull at the bow first, then working aft.

If there has been any dissimilar shrinkage in the two parts, then the difference can be taken up at the stern, by either filling at the joint or by trimming off any excess.



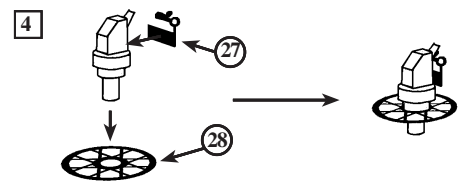
Assemble all of the large component parts and fill any joint lines as necessary, before attempting to assemble any of the smaller parts to the model.

## SUPERSTRUCTURE RAILING LOCATION



Shape and fit the railings sections to the superstructure deck edges as shown above. Note that the railing on the bridge roof has a kick-out to the starboard side to allow for the access ladder to be positioned. The shape can be checked by referring to the plan view of the colour guide.

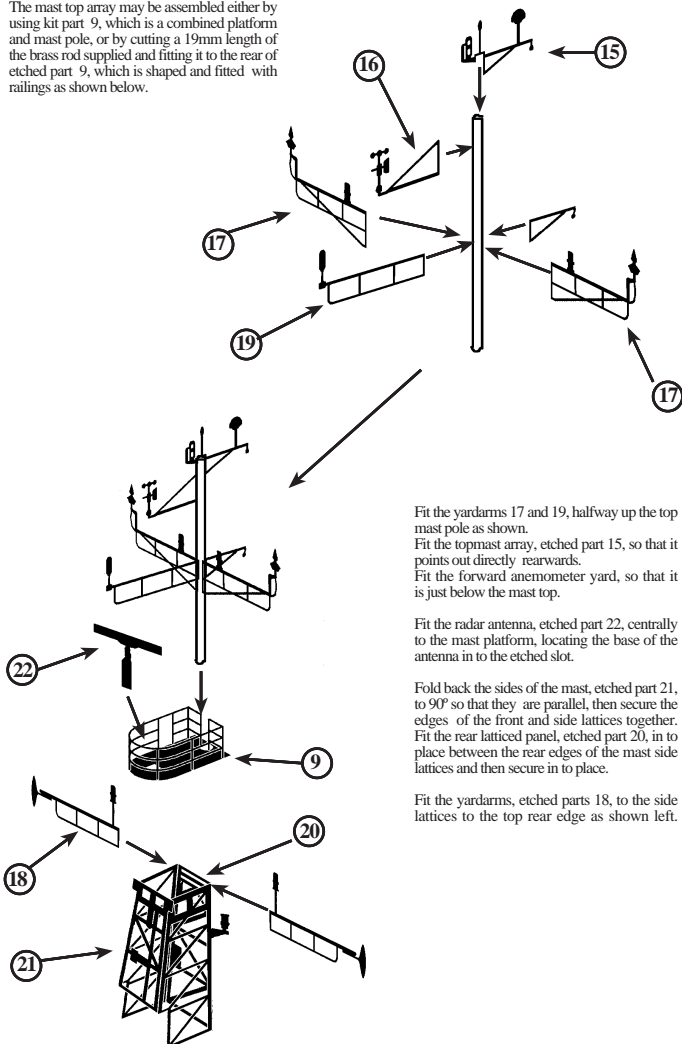
## GUNNERY DIRECTOR ASSEMBLY



Fit the mounting spindle of the director through the hole in the footplate, etched part 28, until it comes against the lower collar. Fix in to place. Fit the optical sight to the rear of the director as shown above left. Fit the completed assembly to the mounting plate on the bridge roof as shown in the diagram below.

## MAST ASSEMBLY

The mast top array may be assembled either by using kit part 9, which is a combined platform and mast pole, or by cutting a 19mm length of the brass rod supplied and fitting it to the rear of etched part 9, which is shaped and fitted with railings as shown below.



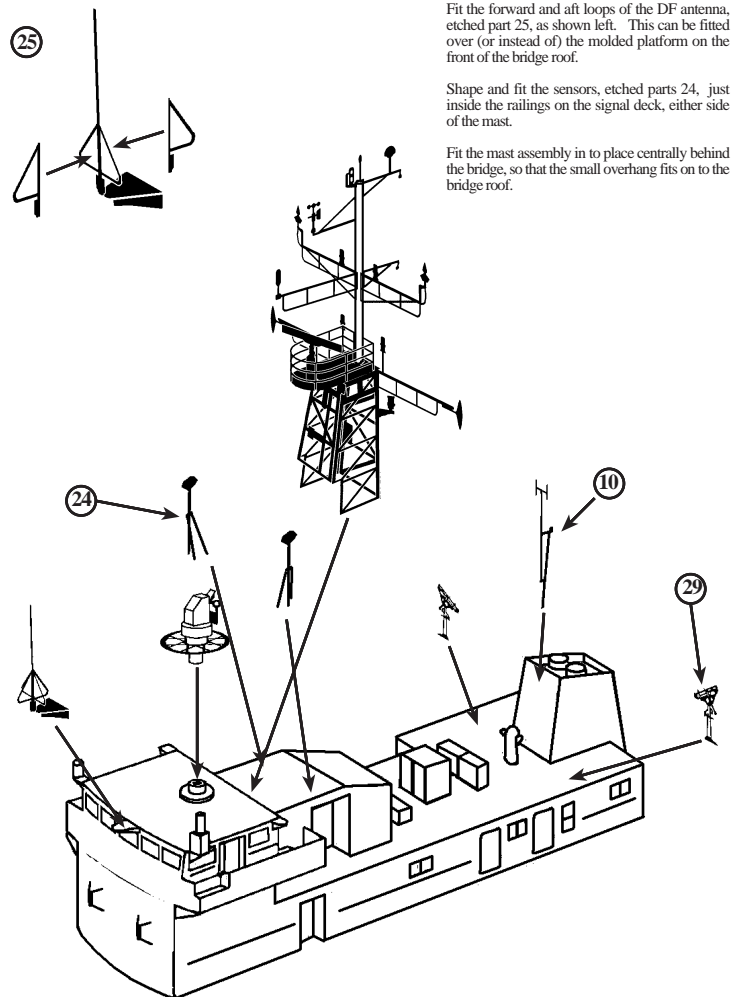
Fit the yardarms 17 and 19, halfway up the top mast pole as shown.  
Fit the topmast array, etched part 15, so that it points out directly rearwards.  
Fit the forward anemometer yard, so that it is just below the mast top.

Fit the radar antenna, etched part 22, centrally to the mast platform, locating the base of the antenna in to the etched slot.

Fold back the sides of the mast, etched part 21, to 90° so that they are parallel, then secure the edges of the front and side lattices together. Fit the rear latticed panel, etched part 20, in to place between the rear edges of the mast side lattices and then secure in to place.

Fit the yardarms, etched parts 18, to the side lattices to the top rear edge as shown left.

## SUPERSTRUCTURE FITTINGS



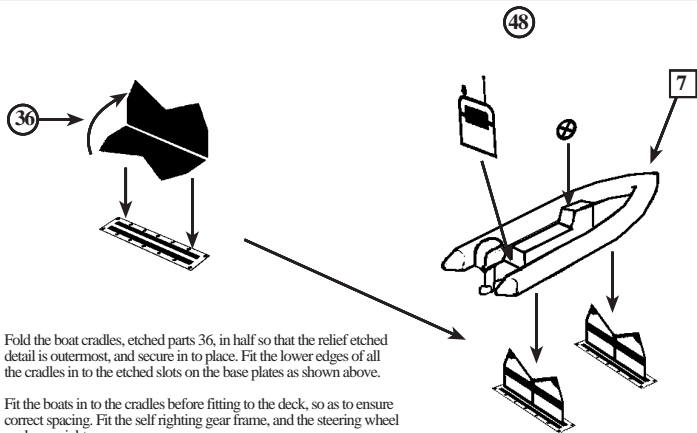
Fit the forward and aft loops of the DF antenna, etched part 25, as shown left. This can be fitted over (or instead of) the molded platform on the front of the bridge roof.

Shape and fit the sensors, etched parts 24, just inside the railings on the signal deck, either side of the mast.

Fit the mast assembly in to place centrally behind the bridge, so that the small overhang fits on to the bridge roof.

Fold the flare launchers, etched parts 29, in half so that the etched detail is outermost. Secure in to place and fit either side of the forward edge of the funnel.  
Fit the small antenna, etched part 10, to the front of the top edge of the funnel.

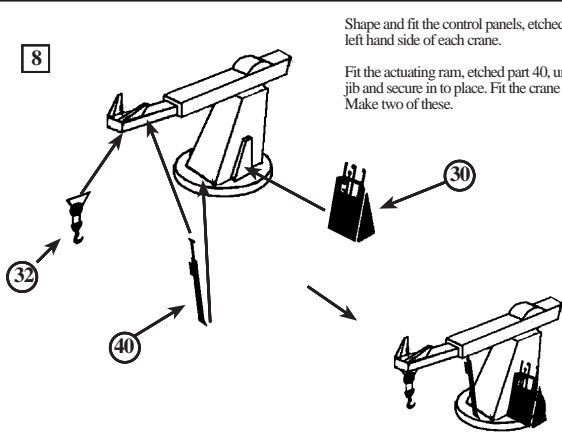
### BOATS AND CRADLES ASSEMBLY



Fold the boat cradles, etched parts 36, in half so that the relief etched detail is outermost, and secure in to place. Fit the lower edges of all the cradles in to the etched slots on the base plates as shown above.

Fit the boats in to the cradles before fitting to the deck, so as to ensure correct spacing. Fit the self righting gear frame, and the steering wheel as shown right.

### BOAT CRANE ASSEMBLY



Shape and fit the control panels, etched parts 30, to the left hand side of each crane.

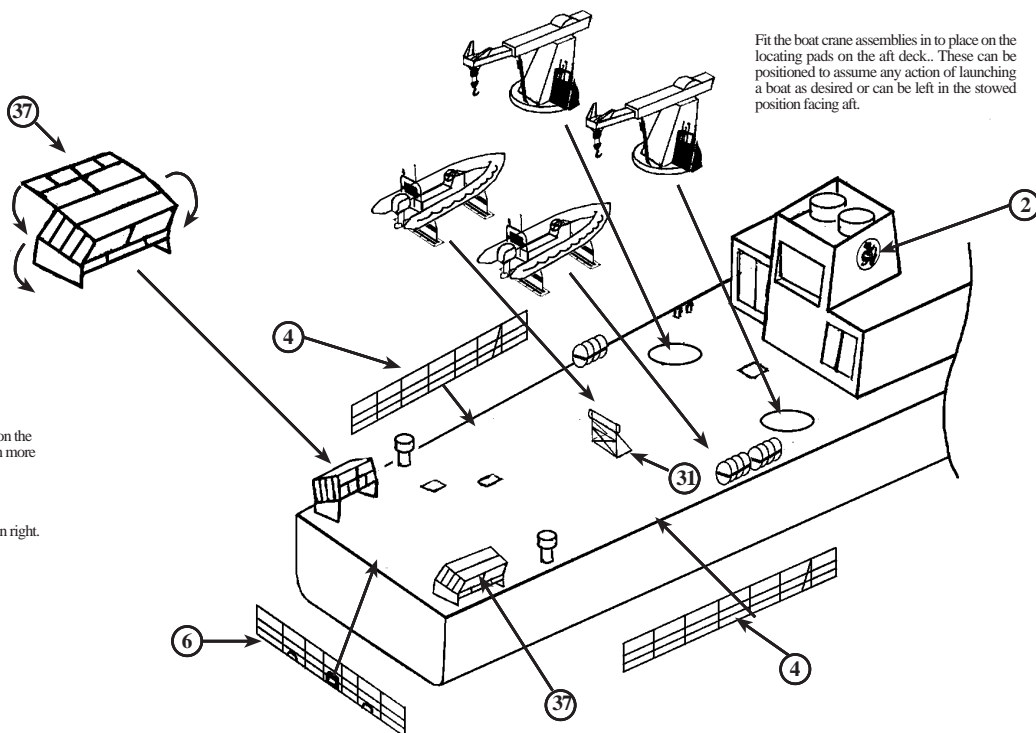
Fit the actuating ram, etched part 40, under the crane jib and secure in to place. Fit the crane hook as desired. Make two of these.

### AFT DECK FITTINGS LOCATION

Shape the boat fuel can stowages, etched parts 37, to make a box-like open frame as shown right. Fit these in place on the stern quarters as shown.

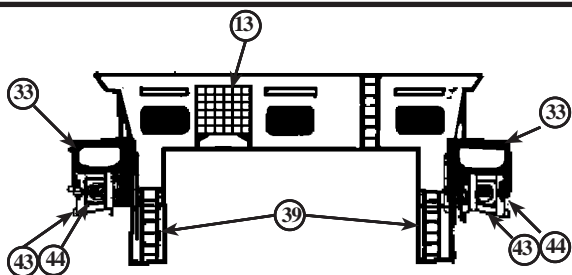
Fit the boats in to place on the aft deck, securing the base plates on the cradles to the deck. The correct position of the boats can be seen more precisely by referring to the plan view in the colour guide

Fit the railings sections 4 and 6 to the edges of the deck as shown right.



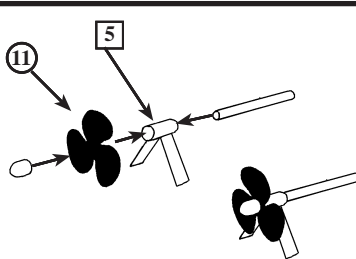
Fit the boat crane assemblies in to place on the locating pads on the aft deck. These can be positioned to assume any action of launching a boat as desired or can be left in the stowed position facing aft.

### BRIDGE REAR DETAILS



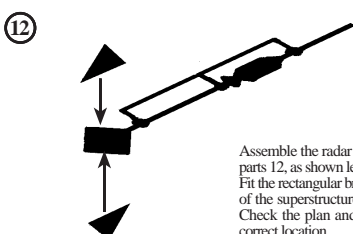
Shape and fit the signal flag locker, etched part 13, to the rear of the bridge, locating as shown above. Remove the solid molded rear sections of the bridge wing bulwarks, and replace with etched parts 33. Fold the life ring holders, etched parts 44, in half and place a life ring in between the two halves. Fit in to place on the rear of the bridge wing bulwarks.

### PROPELLER AND RUDDER ASSEMBLY

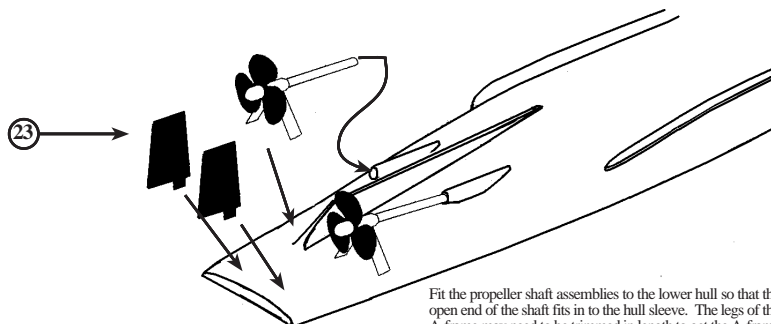


Assemble the propeller shafts by cutting two 9mm lengths from the brass rod supplied and fitting one end in to the bearing on the 'A' frames, metal part 5. Cut the front of the hub boss from the bearing and retain. Fit the propeller, etched part 11, centrally to the flat face on the front of the A frame bearing. Re-fit the hub boss to the front of the propeller as shown left.

### DAN BUOY ASSEMBLY



Assemble the radar reflectors on the Dan Buoys, etched parts 12, as shown left. Fit the rectangular bracket on the buoy's pole to the edges of the superstructure decks, so that they hang outboard. Check the plan and profile in the colour guide for the correct location.



Fit the propeller shaft assemblies to the lower hull so that the open end of the shaft fits in to the hull sleeve. The legs of the A-frame may need to be trimmed in length to get the A-frame to sit correctly on the hull, but there is sufficient length on both legs to do this. Fit the rudders, etched parts 23, in to place directly behind the propellers

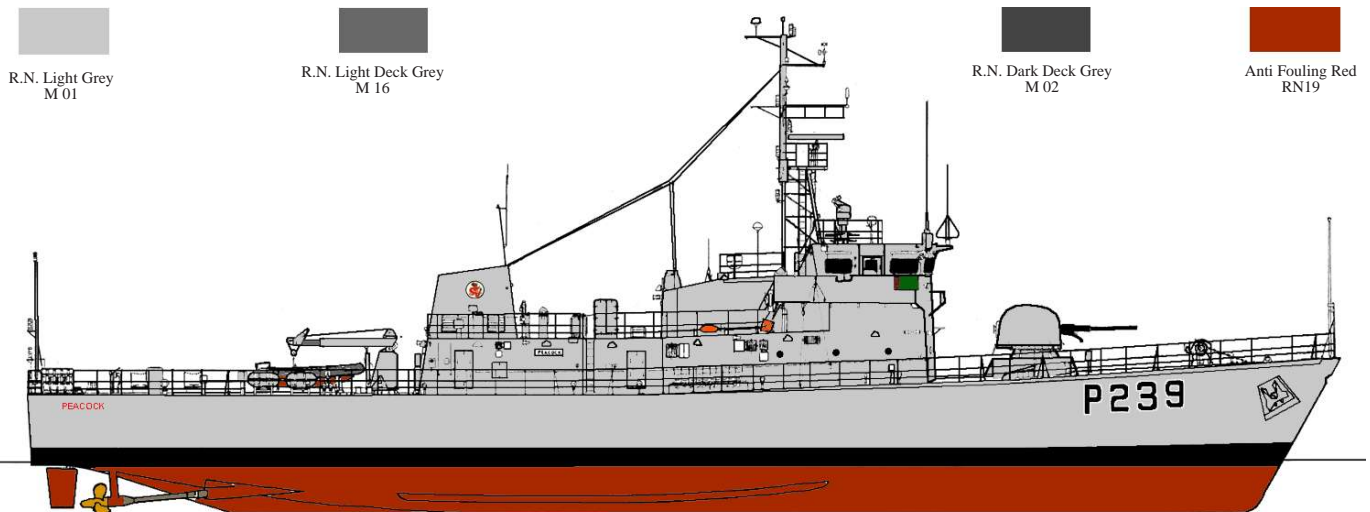
## OTHER INSTRUCTIONS

1. Etched parts 3 are shaped railings that have been curved to fit the contour of the forward deck, from the jackstaff right back to the life raft canisters.
2. Etched part 26 is a circular plate that fits on to the corresponding raised circle on the back of the gun turret. This can be fitted if desired.
3. The searchlight, etched part 46, is fitted centrally to the bridge roof in front of the gun director. This can be enhanced by cutting a short length of plastic rod and fitting it to the rear of the searchlight body, to give it a more 3-dimensional appearance.
4. Watertight doors, etched parts 47, have been supplied to fit to each side of the rear of the superstructure sides. The location is shown on the colour guide profile below.
5. Signal Lamps, etched parts 41, are fitted on to the bridge wing bulwarks, with the lower inverted L-shaped bracket fitting inside the bulwark. These can be enhanced in appearance in the same way as that use on the searchlight.
6. Etched parts 49 are stock sections of vertical ladders. These can be cut to the required length and fitted to the desired locations as necessary. An example being the starboard side of the mast.
7. Etched parts 50 are stock lengths of anchor chain, that can be used to fit to the forward deck from the windlass to the hawsepipes. There is also sufficient chain to run from the hawsepipes to the surface of the water or an anchor buoy, if a waterline line diorama is being modelled at anchor.
8. Ships' name plates have been supplied for all of the ships in the class, etched parts 45. These are located on the rear sides of the superstructure as shown in the colour profile below. The ships of this class were *HMS Peacock* (P239), *HMS Plover* (P240), *HMS Starling* (P241), *HMS Swallow* (P242), *HMS Swift* (P243).
9. There are very few references for these small craft, but there are photographs to be had on the Internet search engines, and also there are a good set of plans available from Jacobin plans.

## COLOUR CHART & PAINTING GUIDE

All paint references in this colour guide are for the highly authentic paints supplied by

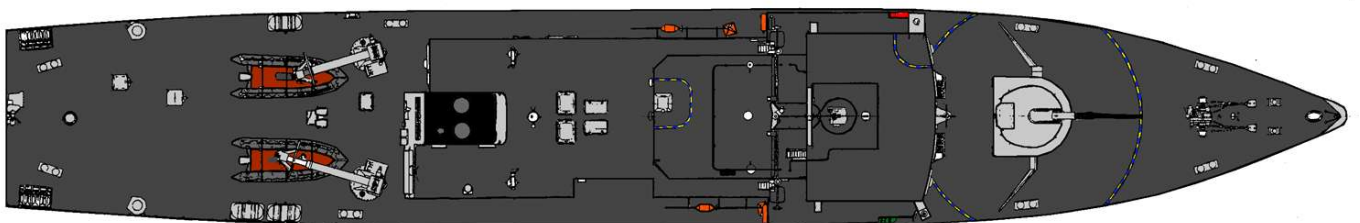
 **COLOURCOATS**   
BY  
**WHITE ENSIGN MODELS**



HONG KONG SQUADRON  
FUNNEL BADGE

**H.M.S. PEACOCK 1997**

Although decals have not been supplied in this kit, a generic set of Modern Royal Navy ship markings and numbers is available from Hawk Graphics and is highly recommended. These can be easily obtained from either Atlantic Models or White Ensign Models.



**ATLANTIC MODELS** © 2012

1 Hillview Grove, Easington, Durham, SR8 3NT. UK Tel. 0191 5271574  
e.mail: [minimariner@talktalk.net](mailto:minimariner@talktalk.net) Website <http://www.atlanticmodels.co.uk>